



The beauty of Fiji lies in its diversity - over 330 islands waiting to be explored. Discovery cruises are designed to offer you an authentic and personal experience of the South Pacific. Circumnavigate Vanua Levu – Fiji's second's largest island – and explore the islands, rivers and rainforests of the remote north. On the way discover the three different cultures of the Ellice (Polynesian), Banabas (Micronesian) and the Fijian (Melanesian) people. Come face to face with the local Iguana species at Yadua National Park, go in search of gentle manta rays in their natural hatchery and snorkel on the world's third longest barrier reef. Travel by tender up the Labasa River to visit Vanua Levu's largest town. Journey on Fiji's deepest river, the Dreketi, through towering rainforests to local villages. A lovo feast, meke and island night completes an amazing journey to the remote north.



Inclusions • All meals (buffet & a la carte) • Daily island stopovers & water activities • Guided island, village & school tours • Snorkelling & glass bottom boat tours • Use of snorkelling equipment & mini gym • Tropical island lovo feast & kava ceremony • Entertainment • Child Minding (5-10yrs) and Nanny Services (under 5yrs) at selected times • 24 hour self-service tea & coffee bar
• Transfers at the end of your cruise from the ship to Nadi & Denarau hotels. Fares exclude transfers to the ship, drinks, optional tours & services.

Bonus Features • Swimming pool, two top deck spa pools & sauna • Massage & beauty services (optional) • Scuba diving - certified & introductory (optional) • Mini-gym & meeting room • Easy access small boat launching platform • Choice of 3 accommodation levels • Friendly Fijian crew with a wealth of local knowledge • Mix of both male & female crew

Facilities: Swimming pool, two top deck spa pools, sauna and mini gym; glass-bottomed boat, snorkelling and dive vessels; two bars, two lounges and a single-sitting dining saloon; day spa, gift shop, chart house, library, guest laundry and 24 hour coffee and tea facilities. MV Reef Endeavour also features a lift from D Deck to Sun Deck (limited access).

Dining: Dining is a vital ingredient in your Fijian cruise. Whether it is an alfresco luncheon, a casual barbecue or table d'hote dinner, our food is prepared on board from fresh local and imported produce and our on-board entertainment adds a special flavour to the mix.

Accommodation: The MV Reef Endeavour has approximately 65 suites, staterooms & cabins. Please note Tabua Staterooms are currently being converted to Tabua Suites or Staterooms. Tabua Staterooms will not be available from April 12. Every cabin type features a private bathroom ensuite, internal telephone, on/off air-conditioning, hair dryer, 240 volt power, international shaver point, soaps, shampoo & towels serviced daily. Each cabin is approximately 14 sqm. Tabua Suites are approximately 28 sqm. Staterooms and Suites open onto the outside deck and have two windows. **Tabua Suites (4)** feature a bedroom (twin/double) with ensuite bathroom, plus a separate day room with, chair, settee, desk, TV & DVD player, refrigerator, tea & coffee facilities and second bathroom. **Tabua Staterooms (6)** are located on the Upper Deck (twin/double). **Connecting Family Staterooms (2)** are located on the upper or main decks (twin/double). **Staterooms (40)** are located on the main decks (twin/double). **Cabins (11)** with portholes, open onto an inside passageway (twin/double/bunk triple/bunk quad).

Discovery Cultural Cruise - 7-Nights Northern Fiji – Lautoka/Denarau (Tue-Tue) selected dates

Circumnavigate Vanua Levu – Fiji's second's largest island - and explore the islands, rivers and rainforests of the remote north.

- **Departs Lautoka Wharf 1.00pm Tuesday (Luggage Check-in between 12 noon – 1pm). Please note access to the wharf is not available until 12 noon. There are no retail outlets at Lautoka Wharf.**
- Disembark Denarau Marina 9.00am Tuesday

Sample Itinerary		Highlights
Tue	Tivua Island - Mamanuca Islands	✓ Circumnavigate Vanua Levu
Wed	Nanau-I-ra - North coast of Viti Levu	✓ Meet the people of three different cultures
	Yadua Island – West coast of Vanua Levu	✓ Explore Labasa town and markets
Thu	Kioa Island – East coast of Vanua Levu	✓ Snorkel the Great Sea Reef
	Rabi Island – East Coast of Vanua Levu	✓ Travel up the Labasa & Dreketi Rivers
Fri	Druadrua Island – NorthEast Coast of Vanua Levu	✓ Visit Yadua Iguana Sanctuary & manta ray natural hatchery
	Kia Island – North Coast of Vanua Levu	✓ Snorkelling, glass bottom boat & dive opportunities most days
Sat	Malau/Labasa – Vanua Levu North	
	Dreketi River – Vanua Levu North	
Sun	Galoa Island – NorthWest Coast of Vanua Levu	
	Yaqaqa Island – NorthWest Coast of Vanua Levu	
Mon	Manava Cay - Sali Sali Is - North Coast of Viti Levu	
Tue	Denarau	

Discovery Cultural Cruise - 7-Nights Northern Fiji – Lautoka/Denarau (Tue-Tue) selected dates

Circumnavigate Vanua Levu – Fiji's second's largest island - and explore the islands, rivers and rainforests of Fiji's remote north.

- **Departs Lautoka Wharf 1.00pm Tuesday (Luggage Check-in between 12 noon – 1pm only)**
- Disembark Denarau Marina 9.00am Tuesday
- **2011/12 dates:** 07Jun11, 02Aug11, 04Oct11, 06Dec11 & 07Feb12
- **2012/13 dates:** 03Apr12, 05Jun12, 07Aug12, 02Oct12, 04Dec12, 05Feb13

Tuesday: Tivua Island

Welcome aboard with a complimentary fruit punch and welcome salusalu (lei) as we set sail for our Fiji Island adventure. This afternoon visit Captain Cook Cruises own exclusive island "Tivua" where you can enjoy a twilight swim, snorkel or relax on the beach. Tonight enjoy our special Welcome Dinner and crew entertainment.

Wednesday: Nananu-I-ra, Yadua Island

Cruise the north coast of Viti Levu to beautiful Nananu-i-ra Island for a fabulous morning of sun, sand and snorkelling. After lunch we cruise north to Yadua Island for a rare opportunity to visit the Crested Iguana Sanctuary. For divers, the surrounding reefs are a natural hatchery for gentle Manta Rays where you may come face to face with these beautiful giants.

Thursday: Kioa Island, Rabi Island

Kioa and Rabi Islands are freehold islands populated by South Sea Islanders. In 2005 Fiji granted them full citizenship. Kioa Island was settled by the people of Tuvalu Island (also called Ellice Island) after they were displaced by rising sea levels. Rabi Island is the home of the Banabas people from Ocean Island in the Pacific. Visit the school, meet the people and enjoy an introduction to the different culture and lifestyles of the Ellice and Banabas Islanders.

Friday: Druadrua Island, Kia Island

Crossing the Northeastern tip of Vanua Levu we cruise to idyllic Druadrua Island. Here you can enjoy the beach activities or perfect your snorkelling style before our arrival at Kia Island and the world's third longest barrier reef. The Great Sea Reef's prolific marine life include extensive varieties of soft corals and fish. Take to the glass bottom boat, snorkel or join the Dive Master for an unforgettable experience. Tonight discover the traditional Fijian culture, with a village sevusevu ceremony, meke and lovo feast.

Saturday: Malau/Labasa, Dreketi River Vanua Levu

Labasa is the largest town on Vanua Levu and lies on a delta formed by three rivers; the Wailevu, the Labasa and the Qawa. Sugar cane is the main industry in this agricultural town. Travel by ship's tender to Labasa town and visit the thriving market of spices, fish, poultry, goat and local products. Seventy kilometres to the southwest lies the Dreketi River. Coursing more than 65km into the interior of Vanua Levu, the Dreketi River is the deepest in Fiji. This afternoon enjoy an opportunity to explore the river by ships tender passing villages and towering rainforests.

Sunday: Galoa Island, Yaqaqa Island

Before rounding the western coast of Vanua Levu we spend a day enjoying the beach and marine beauty of Galoa and Yaqaqa Islands and the surrounding cays and reefs. Today is yours to do as much or as little as you like. Swim, snorkel, beachcomb or laze on the beach. Take a glass bottom boat tour or enjoy a cocktail by the pool.

Monday: Manava Cay Sali Sali Island

As we complete our circumnavigation, we bid farewell to Vanua Levu and make the journey across Bligh Water. This body of water is named after Captain Bligh of Mutiny in the Bounty fame. Bligh, through courage and excellent seamanship - and arguable a return of his good character and leadership qualities - successfully managed to navigate from Tofua, through the Fiji Islands to the Dutch East Indies on a small 7 metre open launch. A harrowing journey over 47 days. Our final destination is Manava Cay Sali Sali Island off the north coast of Viti Levu for our customary swim, snorkel and beach activities. This evening don your sulu (sarong) and join all the celebrations of our Pacific Island Night Finale. Pre-dinner cocktails and appetisers are served in the lounge before our gala farewell dinner featuring the music and dance of the South Pacific.

Tuesday: Nadi

Enjoy breakfast before we return to Denarau Marina with farewell Isa Lei, disembarking 9.00am * Itineraries subject to change due to weather and other operational requirement.

** Itineraries subject to change due to weather and other operational requirements*

Getting to your cruise

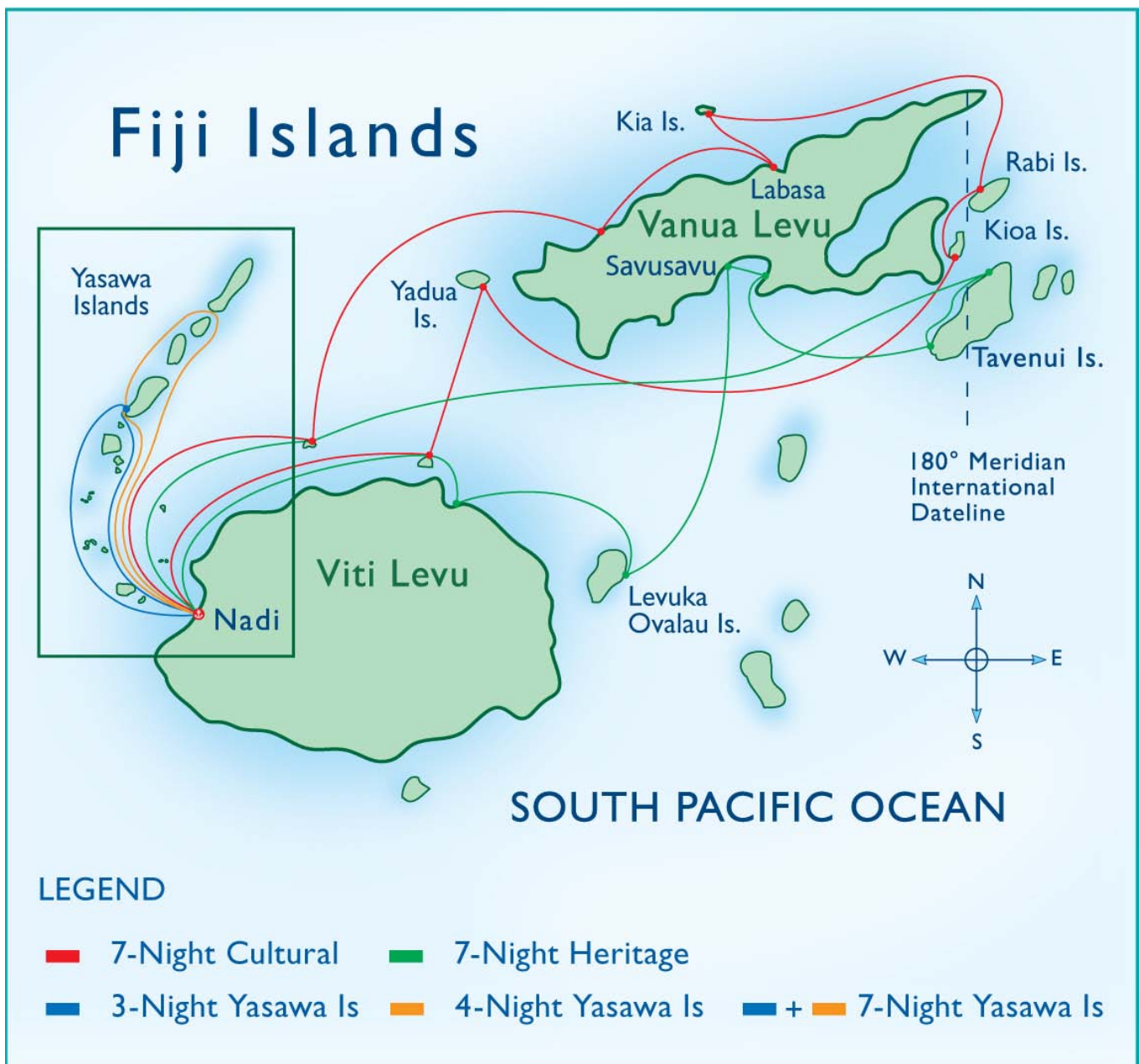
- From 02 January 2012 all passengers are required to make their own way to the ship. On arrival in Fiji please visit or telephone one of our Fiji Offices to reconfirm your booking. Our Nadi Airport Office is centrally located at the Arrivals Concourse and can assist with visitor information.

Fiji Offices

- Port Denarau - Cruise Counter: Daily 8am–9pm – Reservations Ph 675 0504
- Port Denarau – Central Reservations & Administration Office: Daily 8am-5pm – Res Ph 670 1823
- Nadi Airport – Arrivals Concourse: Daily 5am-9pm – Reservations Ph 672 2026 or 672 2027

Taxis are readily available from Nadi Airport and most Nadi/Denarau hotels.

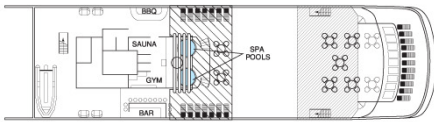
- Airport to Lautoka – taxi approx FJ\$30 / 30 minutes
- Airport to Denarau – taxi approx FJ\$25 / 30 minutes
- Airport to Nadi – taxi approx FJ\$20 / 20 minutes
- Nadi to Lautoka – taxi approx FJ\$40 / 40 minutes
- Nadi to Denarau – taxi approx FJ\$20 / 10 minutes
- Denarau to Lautoka – taxi approx FJ\$45 / 45 minutes



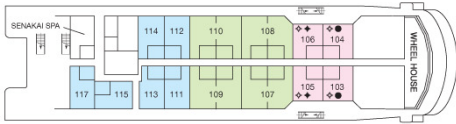
Map is indicative only and subject to change.

REEF ENDEAVOUR

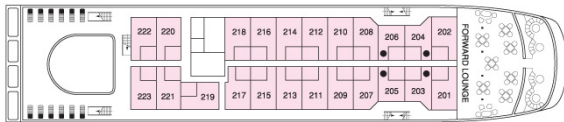
SUN DECK



A DECK TOP DECK



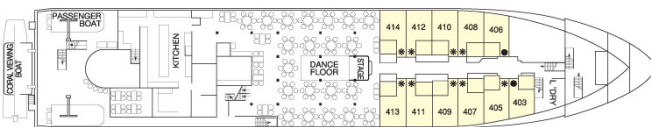
B DECK



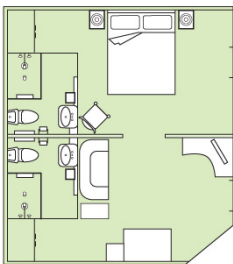
C DECK



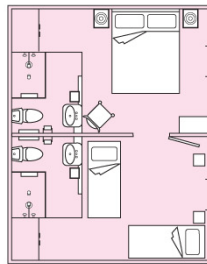
D DECK



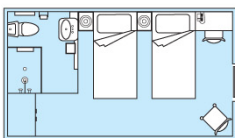
TABUA SUITE



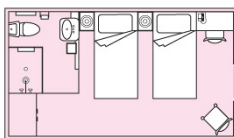
CONNECTING FAMILY STATEROOM



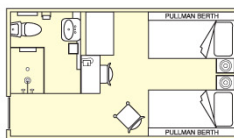
TABUA STATEROOM



STATEROOM



CABIN



LEGEND

All rooms have twin beds convertible to double bed unless indicated as follows:

- Double bed
- * Family Cabins – twin single beds plus two upper Pullman berths
- ◆ Twin beds
- ◇ Connecting Family Staterooms

Deck plans and room configurations are indicative only and subject to change