



The beauty of Fiji lies in its diversity - over 330 islands waiting to be explored. Discovery cruises are designed to offer you an authentic and personal experience of the South Pacific. Cruise beyond the Yasawa Islands to Levuka on the island of Ovalau. This quiet historic town with its stately backdrop of 19th Century colonial architecture and waterfront promenades is a time capsule of colonial rule. Swim in the Bouma Waterfall lagoon on the garden island of Taveuni and stand on the 180th Meridian – the arbitrary Dateline between today and tomorrow. Our journey takes you to Savusavu's extinct volcanic crater, hot springs and thriving markets. Explore picture perfect coral cays for snorkelling, glass bottom boat and scuba diving opportunities and discover the remote Northern islands of Fiji.



Inclusions • All meals (buffet & a la carte) • Daily island stopovers & water activities • Guided island, village & school tours • Snorkelling & glass bottom boat tours • Use of snorkelling equipment & mini gym • Tropical island lovo feast & kava ceremony • Entertainment • Child Minding (5-10yrs) and Nanny Services (under 5yrs) at selected times • 24 hour self-service tea & coffee bar • **Transfers at the end of your cruise from the ship to Nadi & Denarau hotels. Fares exclude transfers to the ship, drinks, optional tours & services.**

Bonus Features • Swimming pool, two top deck spa pools & sauna • Massage & beauty services (optional) • Scuba diving - certified & introductory (optional) • Mini-gym & meeting room • Easy access small boat launching platform • Choice of 3 accommodation levels • Friendly Fijian crew with a wealth of local knowledge • Mix of both male & female crew

Facilities: Swimming pool, two top deck spa pools, sauna and mini gym; glass-bottomed boat, snorkelling and dive vessels; two bars, two lounges and a single-sitting dining saloon; day spa, gift shop, chart house, library, guest laundry and 24 hour coffee and tea facilities. MV Reef Endeavour also features a lift from D Deck to Sun Deck (limited access).

Dining: Dining is a vital ingredient in your Fijian cruise. Whether it is an alfresco luncheon, a casual barbecue or table d'hote dinner, our food is prepared on board from fresh local and imported produce and our on-board entertainment adds a special flavour to the mix.

Accommodation: The MV Reef Endeavour has approximately 65 suites, staterooms & cabins. Please note Tabua Staterooms are currently being converted to Tabua Suites or Staterooms. Tabua Staterooms will not be available from April 12. Every cabin type features a private bathroom ensuite, internal telephone, on/off air-conditioning, hair dryer, 240 volt power, international shaver point, soaps, shampoo & towels serviced daily. Each cabin is approximately 14 sqm. Tabua Suites are approximately 28 sqm. Staterooms and Suites open onto the outside deck and have two windows. **Tabua Suites (4)** feature a bedroom (twin/double) with ensuite bathroom, plus a separate day room with chair, settee, desk, TV & DVD player, refrigerator, tea & coffee facilities and second bathroom. **Tabua Staterooms (6)** are located on the Upper Deck (twin/double). **Connecting Family Staterooms (2)** are located on the upper or main decks (twin/double). **Staterooms (40)** are located on the main decks (twin/double). **Cabins (11)** with portholes, open onto an inside passageway (twin/double/bunk triple/bunk quad).

Discovery Heritage Cruise - 7-Nights Northern Fiji – Lautoka/Denarau (Tue-Tue) selected dates

Visit places without postcards as you embark on a special seven night adventure from the south-west coast of the main island to the remote northern Fiji Islands and across the 180th meridian.

- **Departs Lautoka Wharf 1.00pm Tuesday (Luggage Check-in between 12 noon – 1pm). Please note access to the wharf is not available until 12 noon. There are no retail outlets at Lautoka Wharf.**
- Disembark Denarau Marina 9.00am Tuesday

Sample Itinerary		Highlights
Tue	Tivua Island - Mamanuca Islands	✓ Discover islands and reefs rarely visited
Wed	Nananiu-I-ra - North coast of Viti Levu	✓ Explore Taveuni Island on the 180th Meridian Dateline
	Viti Levu Bay - North coast of Viti Levu	✓ Visit historic Levuka – once the colonial capital of Fiji
Thu	Levuka (old capital) - Ovalau Island (East of Viti Levu)	✓ Swim in the Bouma Waterfall
Fri	Savusavu town - (Vanua Levu)	✓ Visit Savusavu's hot springs and markets
	Savusavu Bay beach	✓ Snorkelling, glass bottom boat & dive opportunities daily
Sat	Bourma Waterfalls – Taveuni Island East	✓ Island Night, kava, meke & lovo feast
	Naselesele Village – Taveuni Island North	
Sun	Wairiki Church & Dateline – Taveuni Island West	
	Whispering Tide Estate – Taveuni Island West Coast	
	Cruise the Southwest coast of Vanua Levu to Wainunu Bay	
Mon	Manava Cay - Sali Sali Is - North coast of Viti Levu	
	Mystery Island - time permitting	
Tue	Denarau	

Discovery Heritage Cruise - 7-Nights Northern Fiji – Lautoka/Denarau (Tue-Tue) selected dates

Visit places without postcards as you embark on a special seven night adventure from the south-west coast of the main island to the remote northern Fiji Islands and across the international dateline.

- **Departs Lautoka Wharf 1.00pm Tuesday (Luggage Check-in between 12 noon – 1pm only)**
- Disembark Denarau Marina 9.00am Tuesday
- **2011/12 dates:** 05Apr11, 03May11, 05Jul11, 06Sep11, 01Nov11, 03Jan12 & 06Mar12
- **2012/13 dates:** 01May12, 03Jul12, 04Sep12, 06Nov12, 01Jan13, 05Mar13

Tuesday: Tivua Island

Welcome aboard with a complimentary fruit punch and welcome salusalu (lei) as we set sail for our Fiji Island adventure. This afternoon visit Captain Cook Cruises own exclusive island “Tivua” where you can enjoy a twilight swim, snorkel or relax on the beach. Tonight enjoy our special Welcome Dinner and crew entertainment.

Wednesday: Nananu-I-ra, Viti Levu Bay

Today we venture beyond the Yasawa Islands to the north coast of Viti Levu with fabulous views of the main island, plus two island stopovers for some sun, sand and snorkelling. A fabulous day to relax into your Fiji adventure and to fully explore all the facilities of your own small cruise ship. Meet your fellow passengers and Ship’s Officers for pre-dinner cocktails in the Ra Marama Lounge with music on the Baby Grand. In the evening join the fun of our popular shipboard Crab Races.

Thursday: Levuka

This morning we arrive at the port of Levuka on the island Ovalau, situated off the northeast coast of the main island. Levuka was the first European settlement in Fiji and became the centre of British colonial administration and trade. At its peak over 50 hotels catered to the thirst of sailors in port and the town gained a wild reputation. In 1888 the capital was moved to Suva on the main island, and Levuka’s notoriety gradually waned. Passengers are invited to join an optional tour of this now quiet historic town with its stately backdrop of 19th Century colonial architecture and waterfront promenades. In the afternoon we visit the children of Marist Convent Primary School.

Friday: Savusavu

This morning we arrive at Savusavu, the second town on the second biggest island in Fiji, Vanua Levu. Savusavu is positioned on an extinct volcanic crater. Choose from a selection of optional tours including a visit to the hot water springs, pearl farm and markets. Later this afternoon we cruise to swimming beach in Savusavu Bay.

Saturday: Bourma Waterfall/Naselesele

This morning we disembark on the western side of Taveuni Island - the “Garden Island” of Fiji. The optional bus tour takes you to the beautiful Bourma Waterfall where you can swim and relax in the beautiful setting. The tour then continues to the Naselesele Village where you can visit the local handicraft markets. Tonight enjoy the tastes of Fiji with a traditional ‘lovo’ (earth oven) feast where we share fresh local seafood, meat succulent tropical fruits. Then dance to the drum of the meke (dance) and kava ceremony.

Sunday: Wairiki, Dateline & Whispering Tide

For an experience not to be missed, join the special choral church service at Wairiki on the western side of Taveuni. Taveuni Island lies on the 180th Meridian, the arbitrary line between today and tomorrow. After the service our crew will take you to the famous Dateline Meridian where you can literally stand with one foot in the past and one foot in the future. This afternoon we visit Whispering Tide for swimming and snorkelling before our scenic cruise along the south west coast of Vanua Levu navigating Bligh Water.

Monday: Manava Cay Sali Sali Island, Mystery Island

Cruising south west from Vanua Levu we arrive at Many Cay Sali Sali Island on the northern side of Viti Levu for our customary swim, snorkel and beachcombing. A lazy morning to enjoy our last beach visit before we reboard for lunch and our homeward journey, with an afternoon stopover at a mystery island (time permitting). This evening don your sulu (sarong) and join all the celebrations of our Pacific Island Night Finale. Pre-dinner cocktails and appetisers are served in the Ra Marama Lounge before our gala farewell dinner featuring the music and dance of the South Pacific.

Tuesday: Nadi

Enjoy breakfast before we return to Denarau Marina with farewell Isa Lei, disembarking 9.00am * Itineraries subject to change due to weather and other operational requirement.

** Itineraries subject to change due to weather and other operational requirements*

Getting to your cruise

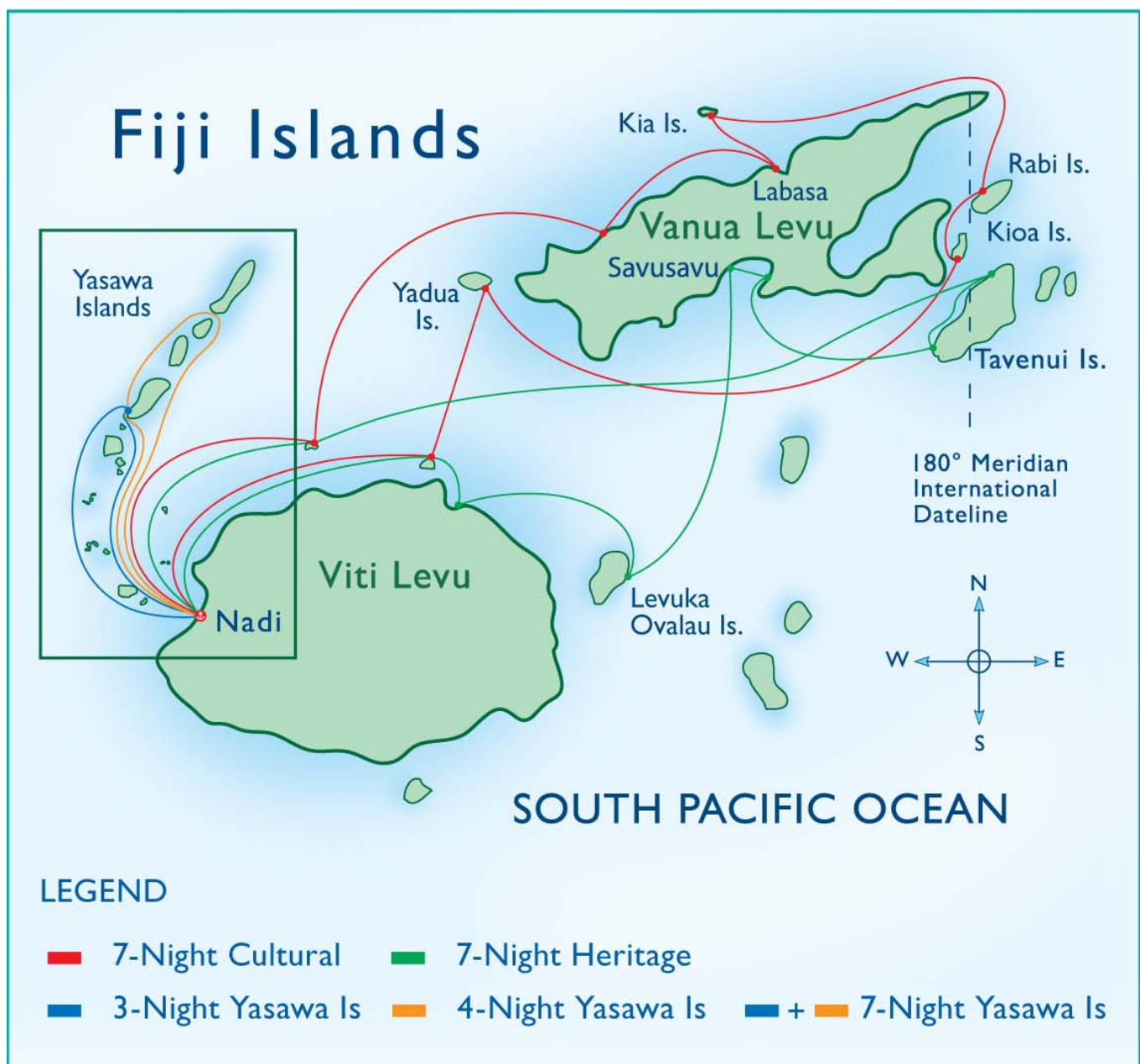
- From 02 January 2012 all passengers are required to make their own way to the ship. On arrival in Fiji please visit or telephone one of our Fiji Offices to reconfirm your booking. Our Nadi Airport Office is centrally located at the Arrivals Concourse and can assist with visitor information.

Fiji Offices

- Port Denarau - Cruise Counter: Daily 8am–9pm – Reservations Ph 675 0504
- Port Denarau – Central Reservations & Administration Office: Daily 8am-5pm – Res Ph 670 1823
- Nadi Airport – Arrivals Concourse: Daily 5am-9pm – Reservations Ph 672 2026 or 672 2027

Taxis are readily available from Nadi Airport and most Nadi/Denarau hotels.

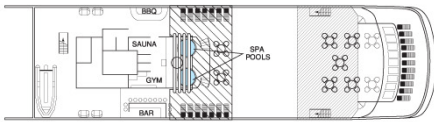
- Airport to Lautoka – taxi approx FJ\$30 / 30 minutes
- Airport to Denarau – taxi approx FJ\$25 / 30 minutes
- Airport to Nadi – taxi approx FJ\$20 / 20 minutes
- Nadi to Lautoka – taxi approx FJ\$40 / 40 minutes
- Nadi to Denarau – taxi approx FJ\$20 / 10 minutes
- Denarau to Lautoka – taxi approx FJ\$45 / 45 minutes



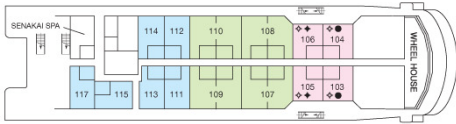
Map is indicative only and subject to change.

REEF ENDEAVOUR

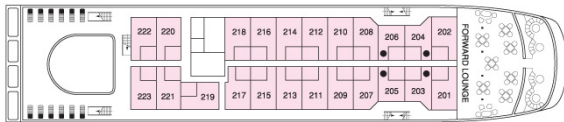
SUN DECK



A DECK TOP DECK



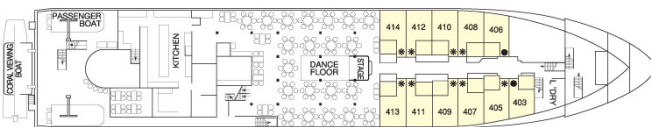
B DECK



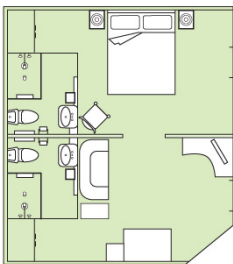
C DECK



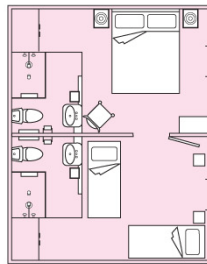
D DECK



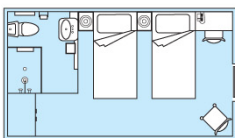
TABUA SUITE



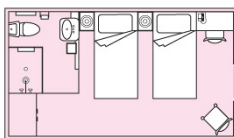
CONNECTING FAMILY STATEROOM



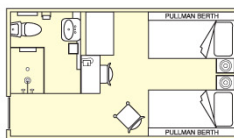
TABUA STATEROOM



STATEROOM



CABIN



LEGEND

All rooms have twin beds convertible to double bed unless indicated as follows:

- Double bed
- * Family Cabins – twin single beds plus two upper Pullman berths
- ◆ Twin beds
- ◇ Connecting Family Staterooms

Deck plans and room configurations are indicative only and subject to change